



English

# Installation, Operation and Maintenance Instructions

X Range



# Spares & Service Contact Details

## Mono UK

<b>Spares</b>	+44 (0)161 214 2380 (direct line 8.15 am – 5.00 pm)
<b>E-mail</b>	spares@mono-pumps.com
<b>Service</b>	+44 (0)161 214 2390 (direct line 8.15 am – 5.00 pm)
<b>E-mail</b>	customerservices@mono-pumps.com
<b>Service</b>	+44 (0)161 339 9000 (24 hrs)

## Mono Australia

	<b>Telephone</b>	<b>Facsimile</b>
<b>Melbourne</b>	(03) 9580 5211	(03) 9580 9036
<b>Sydney</b>	(02) 9521 5611	(02) 9542 3649
<b>Brisbane</b>	(07) 3350 4582	(07) 3350 3750
<b>Adelaide</b>	(08) 8447 8333	(08) 8447 8373
<b>Perth</b>	(08) 9479 0444	(08) 9479 0400
<b>Darwin</b>	(08) 8984 3099	(08) 8947 0540
<b>Tasmania</b>	(03) 6249 8704	(03) 6249 8756
<b>E-mail</b>	ozsales@mono-pumps.com	

## Mono New Zealand

<b>Spares &amp; Service</b>	+64 (0)9 829 0333
<b>E-mail</b>	info@mono-pumps.co.nz

## Monoflo USA

<b>Spares &amp; Service</b>	+1 713 466 7999
<b>E-mail</b>	inquire@monoflo.com

## Monoflo South America

<b>Spares &amp; Service</b>	+54 4296 8997	+54 4284 0323
<b>E-mail</b>	inquire@monoflo.com	

## Mono China

	<b>Telephone</b>	<b>Facsimile</b>
<b>Beijing</b>	+86 (0) 10 6461 1115	+86 (0) 10 8486 8481
<b>Shanghai</b>	+86 (0) 21 5915 7168	+86 (0) 21 5915 6863
<b>E-mail</b>	info@mono-pumps.com	

# ATEX Warning Statements

## PUMPS AND PUMP UNITS

Where a pump or pump unit is to be installed in a potentially explosive atmosphere ensure that this has been specified at the time of purchase and that the equipment has been supplied accordingly and displays an ATEX nameplate or is supplied with a certificate of conformity. If there is any doubt as to the suitability of the equipment please contact Mono Pumps Limited before commencing with installation and commissioning.

Process liquids or fluids should be kept within specified temperature limits otherwise the surface of pump or system components may become an ignition source due to temperature rises. Where the process liquid temperature is less than 90°C the maximum surface temperature will not exceed 90°C provided the pump is installed, operated and maintained in accordance with this manual. Where the process fluid temperature exceeds 90°C the maximum surface temperature will be equal to the maximum process fluid temperature.

Cavities that could allow the accumulation of explosive gases, such as under guards, should where possible, be designed out of the system. Where this is not possible they should be fully purged before any work is carried out on the pump or system.

Electrical installation and maintenance work should only be carried out by suitably qualified and competent persons and must be in accordance with relevant electrical regulations.

All electrical equipment, including control and safety devices, should be suitably rated for the environment in to which they are installed.

Where there may be a risk of an accumulation of explosive gases or dust non-sparking tools should be used for installation and maintenance.

In addition to causing permanent damage to the stator, dry running of the pump could generate a rapid rise in the temperature of the stator tube or barrel, which could become an ignition source. It is therefore essential that a dry run protection device be fitted. This must shut the pump down immediately should a dry run situation occur. Details of suitable devices are available from Mono Pumps Limited.

To minimise the risk of sparking or temperature rises due to mechanical or electrical overload the following control and safety devices should be fitted in addition to a dry run protection system. A pressure relief system whereby the pump can not generate pressures in excess of the maximum rated pressure or an over pressure device which should shut the pump down when the maximum discharge pressure is exceeded. A control system that will shut the pump down if the motor current or temperature exceed specified limits. An isolator switch that will disconnect all electrical supply to the motor and ancillary electrical equipment and be capable of being locked in the off position. All control and safety devices should be fitted, operated and maintained in accordance with the manufacturer's instructions. All valves on the system should be open when the pump is started otherwise serious mechanical overload and failure may result.

It is important that the pump rotates in the direction indicated on the nameplate. This must be checked on installation and commissioning and after any maintenance has been carried out. Failure to observe this may lead to dry running or mechanical or electrical overload.

# ATEX Warning Statements

When fitting drives, couplings, belts, pulleys and guards to a pump or pump unit it is essential that these are correctly fitted, aligned and adjusted in accordance with the manufacturer's instructions. Failure to do so may result in sparking due to unintended mechanical contact or temperature rises due to mechanical or electrical overload or slipping of drive belts. Regular inspection of these parts must be carried out to ensure they are in good condition and replacement of any suspect part must be carried out immediately.

Mechanical seals should be suitably rated for the environment. The seal and any associated equipment, such as a flushing system, must be installed, operated and maintained in accordance with the manufacturer's instructions.

Where a packed gland seal is fitted this must be correctly fitted and adjusted. This type of seal relies on the process liquid to cool the shaft and packing rings so a constant drip of liquid from the gland section is required. Where this is undesirable an alternative seal type should be fitted.

Failure to operate or maintain the pump and ancillary equipment in line with the manufacturer's instructions may lead to premature and potentially dangerous failure of components. Regular inspection, and where necessary replacement, of bearings and lubrication is essential.

The pump and its components have been designed to ensure safe operation within the guidelines covered by legislation. Accordingly Mono Pumps Limited have declared the machine safe to use for the duty specified as defined by the Declaration of Incorporation or Conformity that is issued with this instruction manual.

The use of replacement parts that are not manufactured by or approved by Mono Pumps Limited may affect the safe operation of the pump and it may therefore become a safety hazard to both operators and other equipment. In these circumstances the Declaration provided will become invalid. The guarantee referenced on the Terms and Conditions of Sale will also be invalidated.

<b>SECTION 1</b>	<b>INSTALLATION</b>
	<b>START-UP PROCEDURE</b>
	<b>ASSEMBLY AND DISMANTLING ADVICE</b>
<b>SECTION 2</b>	<b>FAULT FINDING</b>
<b>SECTION 3</b>	<b>DRAWING REFERENCE NUMBERS</b>
<b>SECTION 4</b>	<b>DISMANTLING AND ASSEMBLY DIAGRAMS</b>
	<b>EXPLODED VIEWS</b>
<b>SECTION 5</b>	<b>TORQUE TIGHTENING FIGURES</b>
<b>SECTION 6</b>	<b>MONO PRODUCTS</b>

## EC Declaration as defined by Machinery Directive 98/37/EC.

### EC Declaration of Incorporation

This declaration is only valid when the machinery has been supplied without drive unit.

In this case, the machinery meets the requirements of the said directive and is intended for incorporation into other machinery or for assembly with other machinery in order to constitute relevant machinery as defined by the said directive including any amendments, which are valid at the time of supply.

#### IMPORTANT

This machinery must not be put into service until the relevant machinery into which it is to be incorporated has been declared in conformity to the said directive.

This declaration is only valid when the machinery has been installed, operated and maintained in accordance with these instructions and safety guidelines contained within as well as instructions supplied for equipment assembled with or intended for use with this equipment.

The following harmonised standards are applicable:

BS EN 809

BS EN ISO 12100 Parts 1 & 2

### EC Declaration of Conformity

This declaration is only valid when the machinery has been supplied with drive unit.

In this case the machinery meets the requirements of the said directive including any amendments which are valid at the time of supply.

#### IMPORTANT

This declaration is only valid when the machinery has been installed, operated and maintained in accordance with these instructions and safety guidelines contained within as well as instructions supplied for equipment assembled with or intended for use with this equipment.

Mr (  ) eer

# Installation, Operation & Maintenance Instructions

## INSTALLATION

### 1.1 INSTALLATION AND SAFETY RECOMMENDATIONS

In common with other items of process plant a pump must be installed correctly to ensure satisfactory and safe operation. The pump must also be maintained to a suitable standard. Following these recommendations will ensure that the safety of personnel and satisfactory operation of the pump is achieved.

#### 1.2.1. GENERAL

When handling harmful or objectionable materials, adequate ventilation must be provided in order to disperse dangerous concentrations of vapours. It is recommended that wherever possible, Mono pumps should be installed with provision for adequate lighting, thus ensuring that effective maintenance can be carried out in satisfactory conditions. With certain product materials, a hosing down facility with adequate draining will simplify maintenance and prolong the life of pump components.

#### 1.2.2. SYSTEM DESIGN & INSTALLATION

At the system design stage, consideration must be given to provision of filler plugs, and the installation of isolating valves.

#### i. HORIZONTAL MOUNTING

Pumps are normally installed in a horizontal position, mounted on a flat surface. If inclined or vertical installation is required, check with Mono Pumps Limited.

#### 1.3.1 HANDLING



During installation and maintenance, attention must be paid to the safe handling of all items. Where a pump or its components weigh in excess of 20 kg (45lb) it is recommended that suitable lifting tackle should be used to ensure that personal injury or damage to components does not occur.

For safe handling of pumps and pump units slings should be used. The position of the slings will depend upon the specific pump/unit construction and should be carried out by personnel with the relevant experience to ensure that the pump is not damaged and injury to personnel does not occur.

If eyebolts do exist then these should only be used for lifting the individual components for which they are supplied.

#### 1.3.2 STORAGE

##### SHORT TERM STORAGE

**Where a pump has to be stored for 6 months or less then the following steps are advised:-**

1. Store pump inside wherever possible or if this is not feasible then provide protective covering. Do not allow moisture to collect around the pump.
2. Remove the drain plug, if fitted. Any inspection plates fitted should also be removed to ensure that the suction housing can drain and dry completely.
3. See Manufacturers Instructions for mechanical seal storage procedures.

##### LONG TERM STORAGE

If the pump is to be kept in storage for more than six months then in addition to the above the following procedures should be carried out regularly (every 2 - 3 weeks if possible):

1. If practicable rotate the pump at least three quarters of one revolution to avoid the rotor setting in the stator.
2. Note, however, that the pump is not to be rotated for more than two revolutions each time because damage could be caused to the rotor/ stator elements.



#### IMMEDIATELY PRIOR TO INSTALLATION AND STARTING

**Before installing the pump please ensure that all plugs and inspection plates are replaced.**

#### 1.4 HYDRAULIC DRIVE

When the motor is being connected and checked for rotation, the start/stop sequence must be instantaneous to prevent dry running or pressurising of upstream equipment. (Check direction arrow on pump nameplate). The drive installation should include appropriate isolating equipment to ensure that the pump unit is safe to work on.

# Installation, Operation & Maintenance Instructions

## 1.4.1 ELECTRICAL



Electrical connection should only be made using equipment suitable for both rating and environment. Where any doubts exist regarding the suitability of equipment, Mono Pumps Limited, should be consulted before proceeding. Normally the Mono pump should be installed with starting equipment arranged to give direct on line starting.

Earthing points will be provided on electric drives (if supplied) and it is essential that these are correctly connected. When the motor is being wired and checked for rotation, the start/stop sequence must be instantaneous to prevent dry running or pressurising upstream equipment. (Check direction arrow on pump nameplate). The electrical installation should include appropriate isolating equipment to ensure that the pump unit is safe to work on.

## 1.5 RELIEF VALVES/OVER PRESSURISATION

It is recommended that a suitable safety device is installed on the discharge side of the pump to prevent over-pressurisation of the system.

### IMPORTANT



**The pump must never run against a closed inlet or outlet valve, as this could result in the generation of excessively high pressures and mechanical failure.**

## 1.6 GENERAL SAFETY



**WHERE MONO PUMPS LIMITED HAVE SUPPLIED A BARESHAFT PUMP THE ONUS IS ON THE USER TO FIT ADEQUATE GUARDS IN COMPLIANCE WITH THE REQUIREMENTS OF THE RELEVANT REGULATIONS.**

All nuts and bolts, securing flanges and base mounting fixtures must be checked for tightness before operation. All guards must be securely fixed in position. When commissioning the plant, all joints in the system must be checked thoroughly for leakage.

If, when starting, the pump does not appear to operate correctly, the plant must be shut down immediately and the cause of the malfunction established before operations are recommenced.

It is recommended that depending upon plant system operation, either a combined vacuum and pressure gauge, or a vacuum gauge only be fitted to the pump inlet port, and a pressure gauge fitted to the outlet port, these will then continuously monitor the pump operating conditions.

## 1.7 DUTY CONDITIONS

Pumps should only be installed on duties for which Mono Pumps Limited have specified the materials of construction, flow rates, pressure, temperature, speed etc. Where dangerous materials are to be pumped, consideration must be given to the safe discharge from relief valves, gland drains etc.



**If the duty should be changed Mono Pumps Ltd should be contacted and their recommendations sought in the interest of application, safety of plant, efficiency and pump life.**

## 2. START-UP PROCEDURE

Pumps must be filled with liquid before starting. The initial filling is not for priming purposes, but to provide the necessary lubrication of the stator until the pump primes itself. When the pump is stopped, sufficient liquid will normally be trapped in the rotor/stator assembly to provide lubrication upon re-starting.

If, however, the pump has been left standing for an appreciable time, moved to a new location, or has been dismantled and re-assembled, it must be refilled with liquid and given a few turns before starting.

The pump is normally somewhat stiff to turn by hand owing to the close rotor/stator fit. However, this stiffness disappears when the pump is running normally against pressure.

### 2.1 DRY RUNNING



**NEVER RUN THE PUMP IN A DRY CONDITION EVEN FOR A FEW REVOLUTIONS OR THE STATOR WILL BE DAMAGED IMMEDIATELY. CONTINUAL DRY RUNNING COULD PRODUCE SOME HARMFUL OR DAMAGING EFFECTS.**



# Installation, Operation & Maintenance Instructions

## 2.2 PUMP ROTATION DETAILS

The normal direction of rotation is anti-clockwise when viewed from the drive end (suction on gland), but the pump may be run clockwise for cleaning and maintenance purposes, taking 2.1 into account at all times.



**Maximum pressure rating for suction housing and gland is 1 bar (15 psi) unless otherwise stated by Mono Pumps Ltd.**

### DIRECTIONS OF ROTATION



**BEFORE THE DIRECTION OF ROTATION IS CHANGED, MONO PUMPS LIMITED MUST BE CONSULTED SO THAT THE SUITABILITY OF THE PUMP CAN BE CONFIRMED WHEN OPERATING ON THE NEW DUTY.**

### 2.3.1. LIPSEAL GLAND

Lipseals are supplied as a pair fitted in a 'back to back' arrangement as standard. **NOTE**, pressure limits as 2.2.

### 2.3.2 MECHANICAL SEALS

When a mechanical seal is fitted to the pump it may be necessary to provide a barrier fluid to some part of the seal. This should be provided in line with the seal manufacturers instructions.

## 2.4. GUARDS



In the interests of safety, and in accordance with all relevant Health and Safety regulations, all guards must be replaced after necessary adjustments have been made to the pump.

## 2.5 WARNING/CONTROL DEVICE

Prior to operating the pump, if any warning or control devices are fitted these must be set in accordance with their specific instructions.

## 2.6 PUMP OPERATING TEMPERATURE

The range of temperatures the pump surfaces will develop is dependent upon factors such as product temperature and ambient temperature of the installation. There may be instances where the external pump surface can exceed 50°C.

In these instances, personnel must be made aware of this and suitable warnings/guarding used.

## 2.7 NOISE LEVELS

1. The noise sound pressure level will not exceed 85dB at one metre distance from the pump. This is based on a typical installation and does not necessarily include noise from other sources.

## 2.8 LUBRICATION

Pumps should be inspected periodically to see if grease replenishment is necessary, and if so, grease should be added until the chambers at the ends of the bearing spacer are approximately one third full.

Periodic bearing inspection is necessary to maintain optimum bearing performance. The most expedient time to inspect is during periods of regular scheduled equipment downtime - for routine maintenance or for any other reason.

Under tropical or other arduous conditions, however, a more frequent examination may be necessary. It is therefore advisable to establish a correct maintenance schedule or periodic inspection.

BP Energrease LC2 or its equivalent must be used for replenishment.

## 2.9 PUMP UNITS

Where a pump unit is dismantled and re-assembled, consideration must be given to ensure that where appropriate the correct alignment of pump and drive is maintained.

## 2.10 CLEANING PRIOR TO OPERATION

During the commissioning of a new pump or recommissioning of an overhauled pump, it is advisable to clean the pump prior to the initial operation of the pump in the process.

## 2.11 EXPLOSIVE PRODUCTS/HAZARDOUS ATMOSPHERES

In certain instances the product being pumped may well be of a hazardous nature.

In these installations consideration must be given to provide suitable protection and appropriate warnings to safeguard personnel and plant.

# Installation, Operation & Maintenance Instructions

## 2.12 ACCESS PORTS



Where access ports are fitted then the following steps must be followed prior to removal:



1. Pump must be shut down and power supply isolated.
2. Protective clothing should be worn, especially if the pumped product is obnoxious/hazardous to health.
3. Remove access plate with care utilising where possible drip trays to collect product leakage.

Access ports are included to assist in removing blockages and to allow a visual check on the components within the suction chamber and aid dismantling.

Re-assembly of the plate should be completed using new gaskets prior to the pump being started.

## 2.13 MAINTENANCE OF WEARING COMPONENTS

### 2.13.1 ROTOR AND STATOR

The wear rate on these components is dependent on many factors, such as product abrasivity, speed, pressure etc.

When pump performance has reduced to an unacceptable level one or possibly both items will need replacing.

### 2.13.2 SHAFT – LIPSEAL GLAND

The wear rate of the gland area is dependent on many factors such as product abrasivity and speed.

Regular gland maintenance will maximise the life of the shaft.

Replacement of both seals and shaft will be necessary when shaft sealing becomes difficult to achieve.

### 2.13.3 FLEXISHAFT DRIVE

With this design there are no wearing items to replace in the drive train, however, if during routine inspection the shaft is visibly damaged / distorted or the protective coating is damaged, then this item should be replaced to avoid unexpected breakdowns. This component is integral with the rotor throughout this pump range and can only be replaced as an assembly.

## 3.0 ASSEMBLY AND DISMANTLING

Section 4 contains the steps to dismantle and re-assemble the pump. All fastenings must be tightened securely and when identified the appropriate torque figures should be used.

### 3.1 USE OF ITEMS NOT APPROVED OR MANUFACTURED BY MONO PUMPS LIMITED

The pump and its components have been designed to ensure that the pump will operate safely within the operational guidelines.

The use of replacement items that are not approved by or manufactured by Mono Pumps Limited may affect the safe operation of the pump and it may therefore become a safety hazard to both operators and other equipment.

In these instances the declaration provided will therefore become invalid. The guarantee referenced in the terms and conditions of sale will also be invalidated if replacement items are not approved or manufactured by Mono Pumps Ltd.

### DISPOSAL OF WORN COMPONENTS



*When replacing wearing parts, please ensure disposal of used parts is carried out in compliance with local environmental legislation. Particular care should be taken when disposing of lubricants.*

# Diagnostic Chart

SYMPTOMS		POSSIBLE CAUSES	
1.	NO DISCHARGE	1. 2. 3. 7. 26. 28. 29.	
2.	LOSS OF CAPACITY	3. 4. 5. 6. 7. 8. 9. 10. 22. 13. 16. 17. 21. 22. 23. 29	
3.	IRREGULAR DISCHARGE	3. 4. 5. 6. 7. 8. 13. 15. 29.	
4.	PRIMING LOST AFTER START	3. 4. 5. 6. 7. 8. 13. 15	
5.	PUMP STALLS AT START UP	8. 11. 24.	
6.	PUMP OVERHEATS	8. 9. 11. 12. 18. 20	
7.	MOTOR OVERHEATS	8. 11. 12. 15. 18. 20.	
8.	EXCESSIVE POWER ABSORBED BY PUMP	8. 11. 12. 15. 18. 20	
9.	NOISE AND VIBRATION	3. 4. 5. 6. 7. 8. 9. 11. 13. 15. 18. 19. 20. 22. 23. 27. 31	
10.	PUMP ELEMENT WEAR	9. 11.	
11.	EXCESSIVE GLAND OR SEAL WEAR	12. 14. 25. 30.	
12.	GLAND LEAKAGE	13. 14.	
13.	SEIZURE	9. 11. 12. 20.	
LIST OF CAUSES		REMEDIAL ACTIONS	
1.	INCORRECT DIRECTION OF ROTATION	1.	REVERSE MOTOR
2.	PUMP UNPRIMED	2.	BLEED SYSTEM OF AIR/GAS
3.	INSUFFICIENT N.P.S.H. AVAILABLE	3.	INCREASE SUCTION HEAD OR REDUCE SPEED/TEMP.
4.	PRODUCT VAPORISING IN SUPPLY LINE	4.	INCREASE N.P.S.H. AVAILABLE (SEE 3 ABOVE)
5.	AIR ENTERING SUPPLY LINE	5.	CHECK PIPE JOINTS/GLAND ADJUSTMENT
6.	INSUFFICIENT HEAD ABOVE SUPPLY VESSEL OUTLET	6.	RAISE VESSEL/INCREASE PIPE SIZE
7.	FOOTVALVE/STRAINER OBSTRUCTED OR BLOCKED	7.	CLEAN OUT SUCTION LINE/VALVES
8.	PRODUCT VISCOSITY ABOVE RATED FIGURE	8.	DECREASE PUMP SPEED/INCREASE TEMP.
9.	PRODUCT TEMP. ABOVE RATED FIGURE	9.	COOL THE PRODUCT
10.	PRODUCT VISCOSITY BELOW RATED FIGURE	10.	INCREASE PUMP SPEED/REDUCE TEMP.
11.	DELIVERY PRESSURE ABOVE RATED FIGURE	11.	CHECK FOR BLOCKAGES IN DELIVERY LINE
12.	GLAND OVERTIGHT	12.	ADJUST GLAND SEE O&M INSTRUCTIONS
13.	GLAND UNDERTIGHT	13.	ADJUST GLAND SEE O&M INSTRUCTIONS
14.	GLAND FLUSHING INADEQUATE	14.	CHECK FLUID FLOWS FREELY INTO GLAND
15.	PUMP SPEED ABOVE RATED FIGURE	15.	DECREASE PUMP SPEED
16.	PUMP SPEED BELOW RATED FIGURE	16.	INCREASE PUMP SPEED
17.	BELT DRIVE SLIPPING	17.	RE-TENSION BELTS
18.	COUPLING MISALIGNED	18.	CHECK AND ADJUST ALIGNMENT
19.	INSECURE PUMP/DRIVE MOUNTING	19.	CHECK AND TIGHTEN ALL PUMP MOUNTINGS
20.	SHAFT BEARING WEAR/FAILURE	20.	REPLACE BEARINGS
21.	WORN PUMP ELEMENT	21.	FIT NEW PARTS
22.	RELIEF VALVE CHATTER	22.	CHECK CONDITION OF VALVE/RENEW
23.	R.V. INCORRECTLY SET	23.	RE-ADJUST SPRING COMPRESSION
24.	LOW VOLTAGE	24.	CHECK VOLTAGE/WIRING SIZES
25.	PRODUCT ENTERING PACKING AREA	25.	CHECK PACKING CONDITION AND TYPE
26.	DRIVE TRAIN BREAKAGE	26.	CHECK AND REPLACE BROKEN COMPONENTS
27.	NEGATIVE OR VERY LOW DELIVERY HEAD	27.	CLOSE DELIVERY VALVE SLIGHTLY
28.	DISCHARGE BLOCKED/VALVE CLOSED	28.	REVERSE PUMP/RELIEVE PRESSURE/CLEAR BLOCKAGES
29.	STATOR TURNING	29.	REPLACE WORN PARTS/TIGHTEN UP STATOR BOLTS
30.	STUFFING BOX "EATS" PACKING	30.	CHECK FOR WORN SHAFT AND REPLACE
31.	VEE BELTS	31.	CHECK AND ADJUST TENSION OR REPLACE

# Drawing Reference Numbers

<u>DRG.</u> <u>REF</u>	<u>DESCRIPTION</u>	<u>DRG.</u> <u>REF</u>	<u>DESCRIPTION</u>
01A	BODY	P101	BEARING
06A	NAMEPLATE (SOG)	P102	BEARING
06B	NAMEPLATE (DOG)	P103	LIP SEAL
10A	LIPSEALS	P105	HEX. HD. BOLT
11A	BEARING COVER	P106	HEX. NUT
15A	THROWER GUARD	P107	WASHER
20B	GASKET (SUCTION CHAMBER)	P108	SPRING WASHER
22A	STATOR	P109	THRD. CUT SCREW
23A	SUCTION CHAMBER	P110	WASHER
24A	END COVER	P111	SOC. HD CAP SCREW
25A	ROTOR/FLEXISHAFT ASSY	P112	SPRING WASHER
32A	SHAFT	P113	DRIVESCREW
35A	BEARING SPACER	P401	SQ PAR KEY
47A	HALF RING	P402	SEAL
47B	HALF RING	P404	SOC. CAP SCREW
62A	SUPPORT FOOT	P408	LOCKNUT
62B	SUPPORT FOOT	P409	LOCKWASHER
65A	GLAND SECTION	P416	SPRING WASHER
76A	ADAPTOR FLANGE – HALF RINGS	P502	TAPER PLUG
76B	ADAPTOR FLANGE – HALF RINGS	P503	HEX NUT
		P504	SPRING WASHER
		P505	WASHER
		P506	HEX NUT
		P507	SPRING WASHER
		P508	WASHER
		P527	HEX HD BOLT
		P528	SPRING WASHER
		P529	WASHER
		P530	HEX NUT
		P580	HEX HD BOLT
		P581	STUD
		P582	STUD

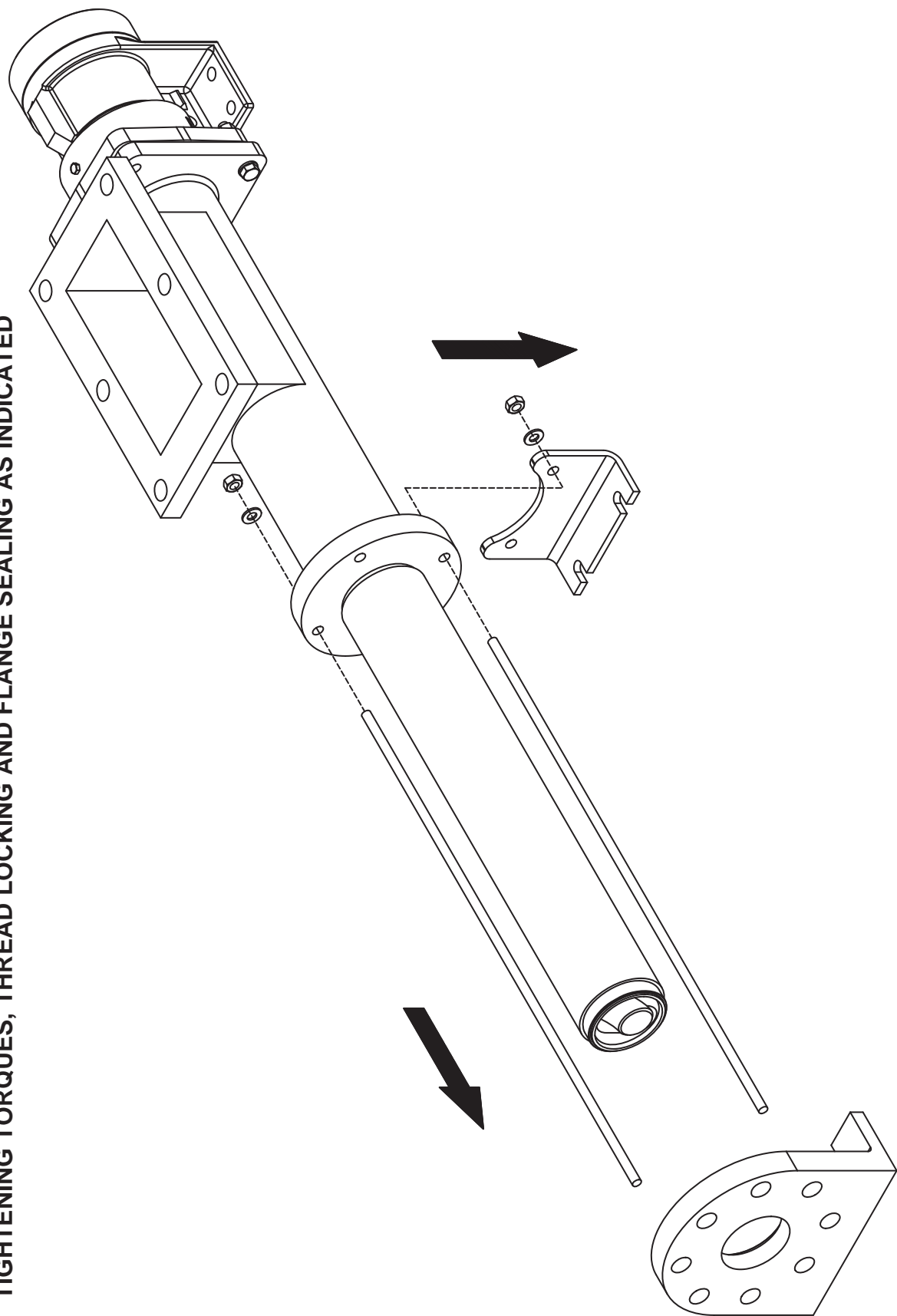
## **IMPORTANT NOTE**

THE DRAWING REFERENCES SHOWN GIVE THE DESCRIPTION OF ALL THE PARTS DETAILED ON THE SECTIONAL DRAWINGS IN THIS SECTION OF THE BOOK. THEREFORE SOME OF THE REFERENCES MAY NOT BE SHOWN ON ANY ONE.

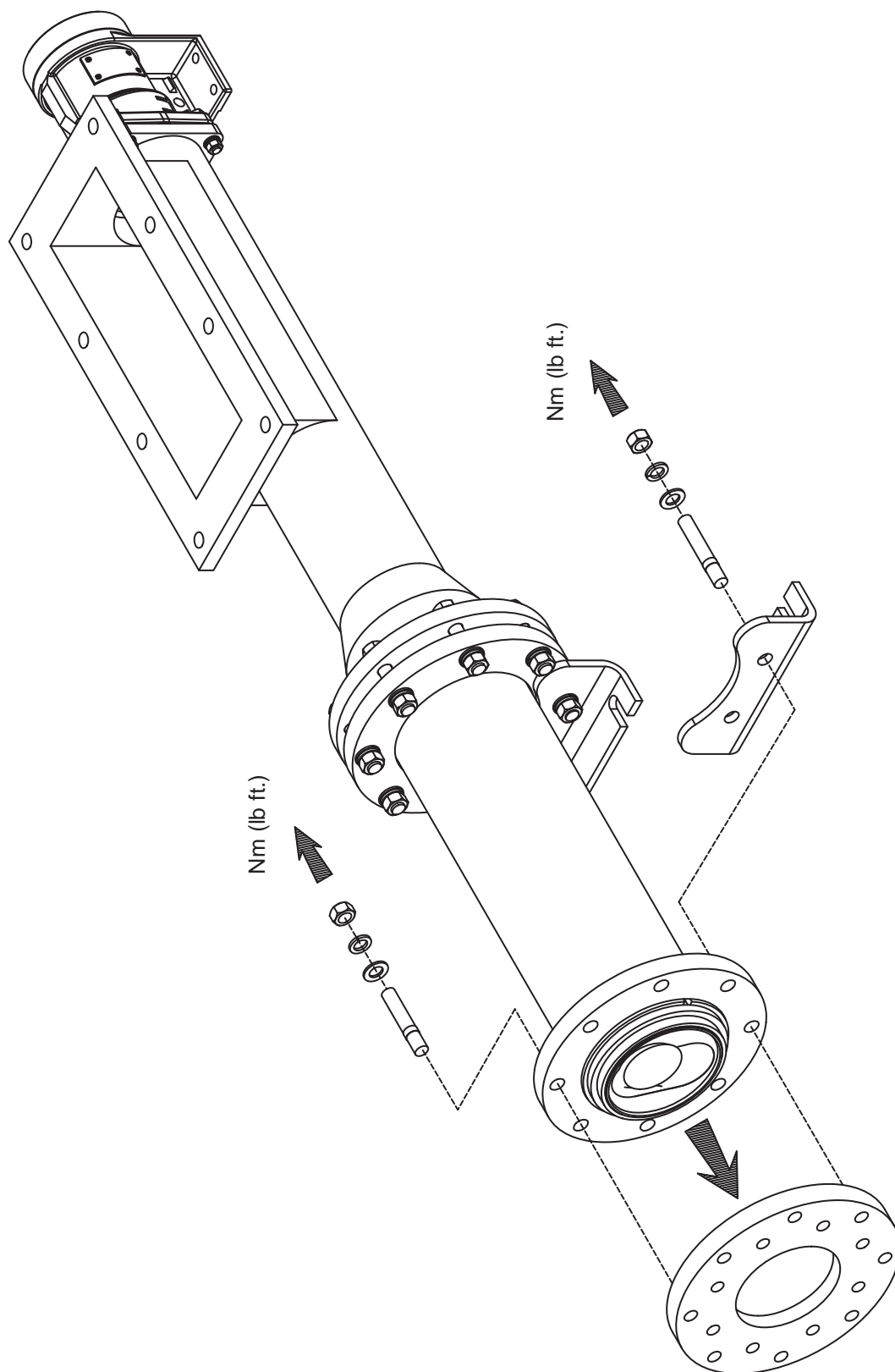
# Dismantling & Assembly Diagrams

**X043 ONLY**

**NOTE:-**  
**ASSEMBLY IS REVERSE OF THIS PROCEDURE TAKING INTO ACCOUNT FASTENER**  
**TIGHTENING TORQUES, THREAD LOCKING AND FLANGE SEALING AS INDICATED**

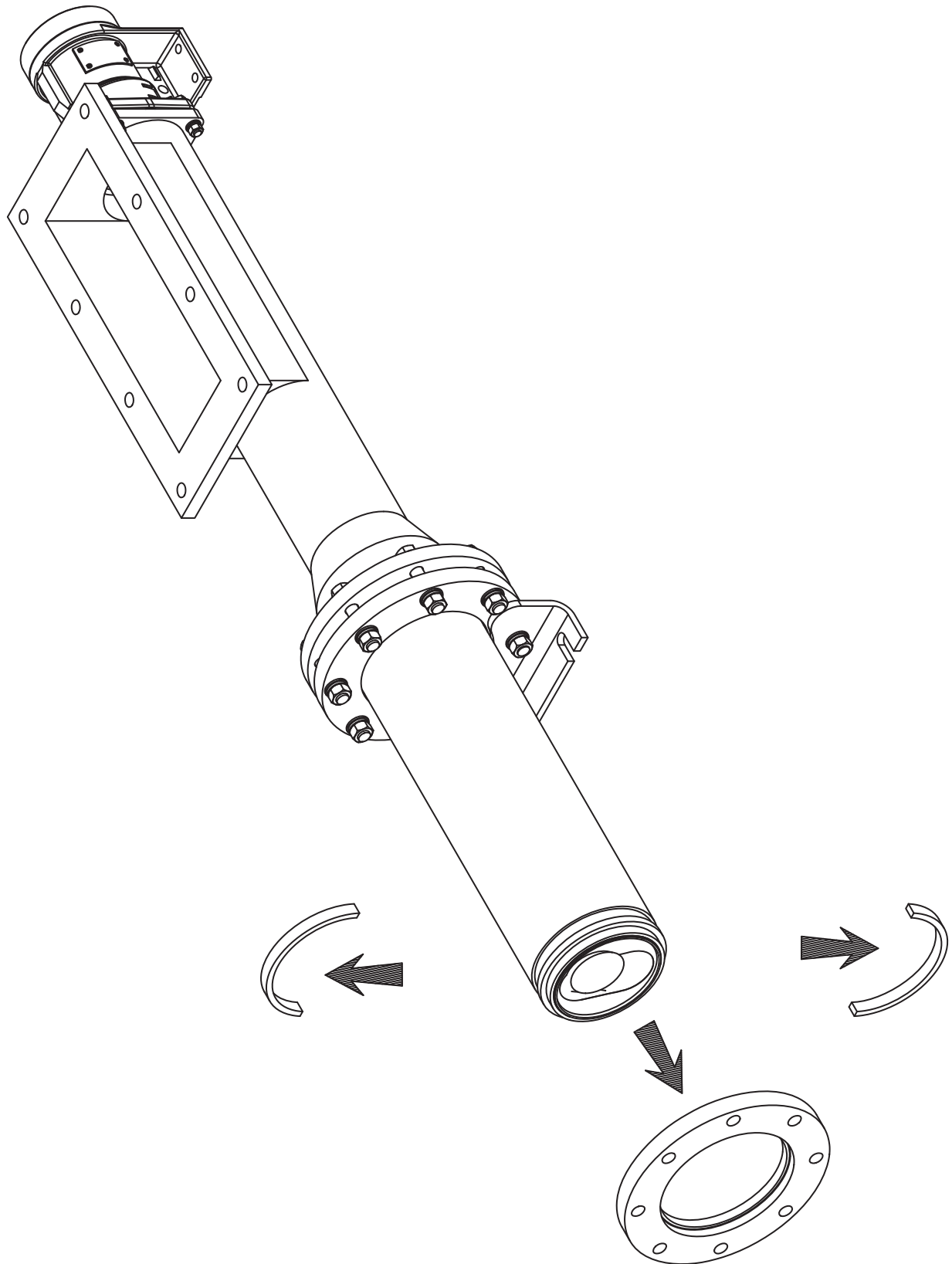


# Dismantling & Assembly Diagrams



ALL EXCEPT X043

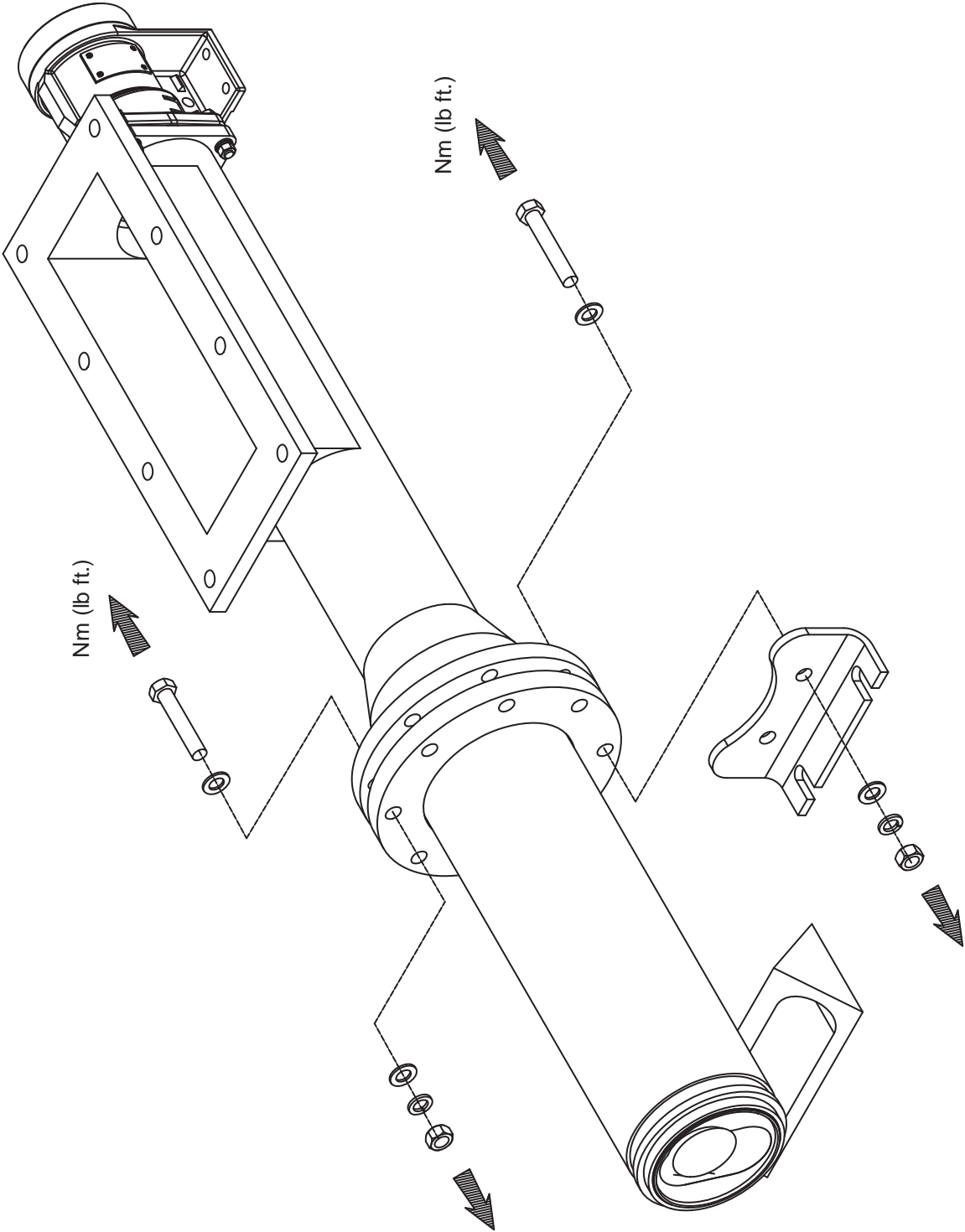
# Dismantling & Assembly Diagrams



ALL EXCEPT X043

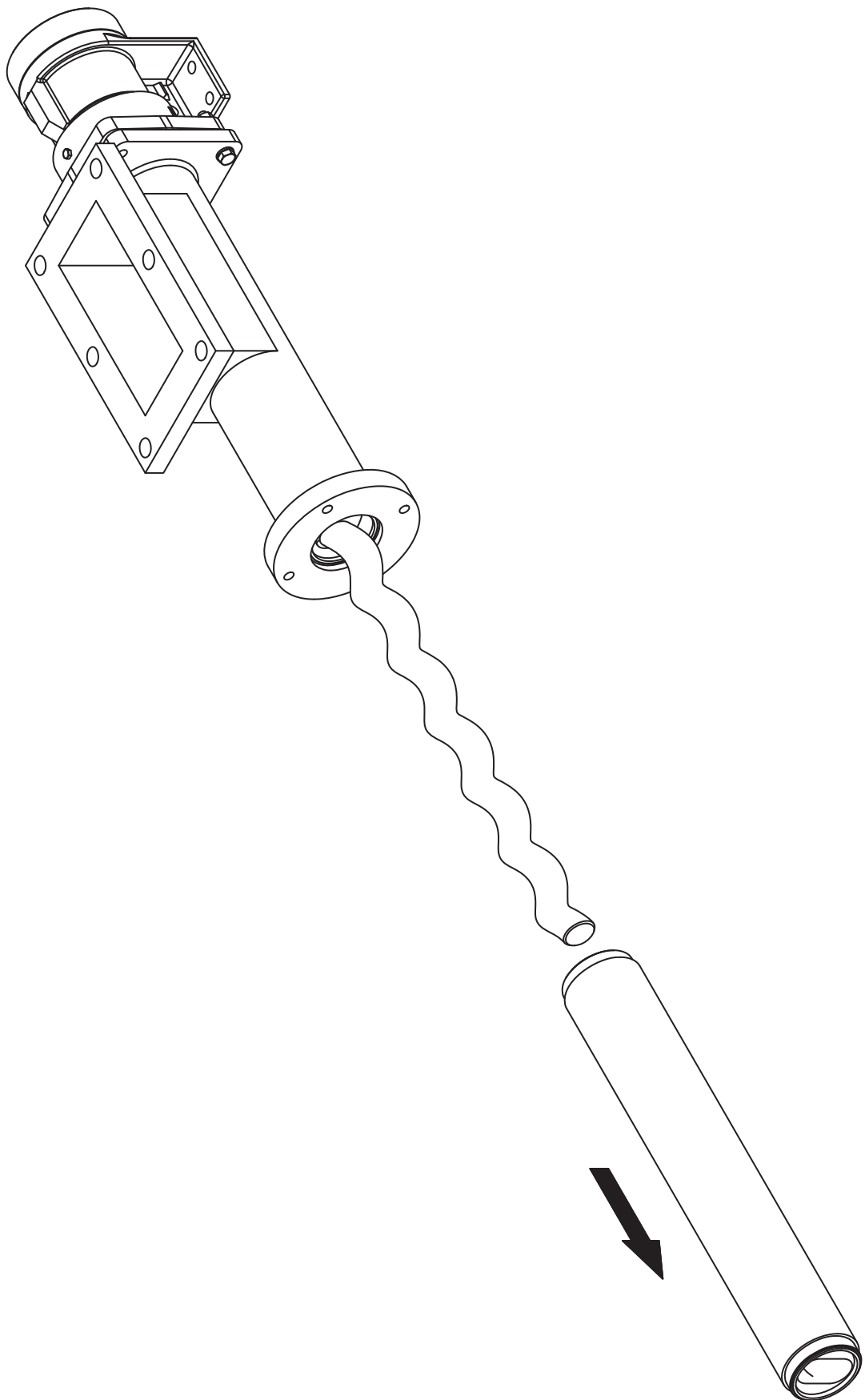
# Dismantling & Assembly Diagrams

ALL MODELS



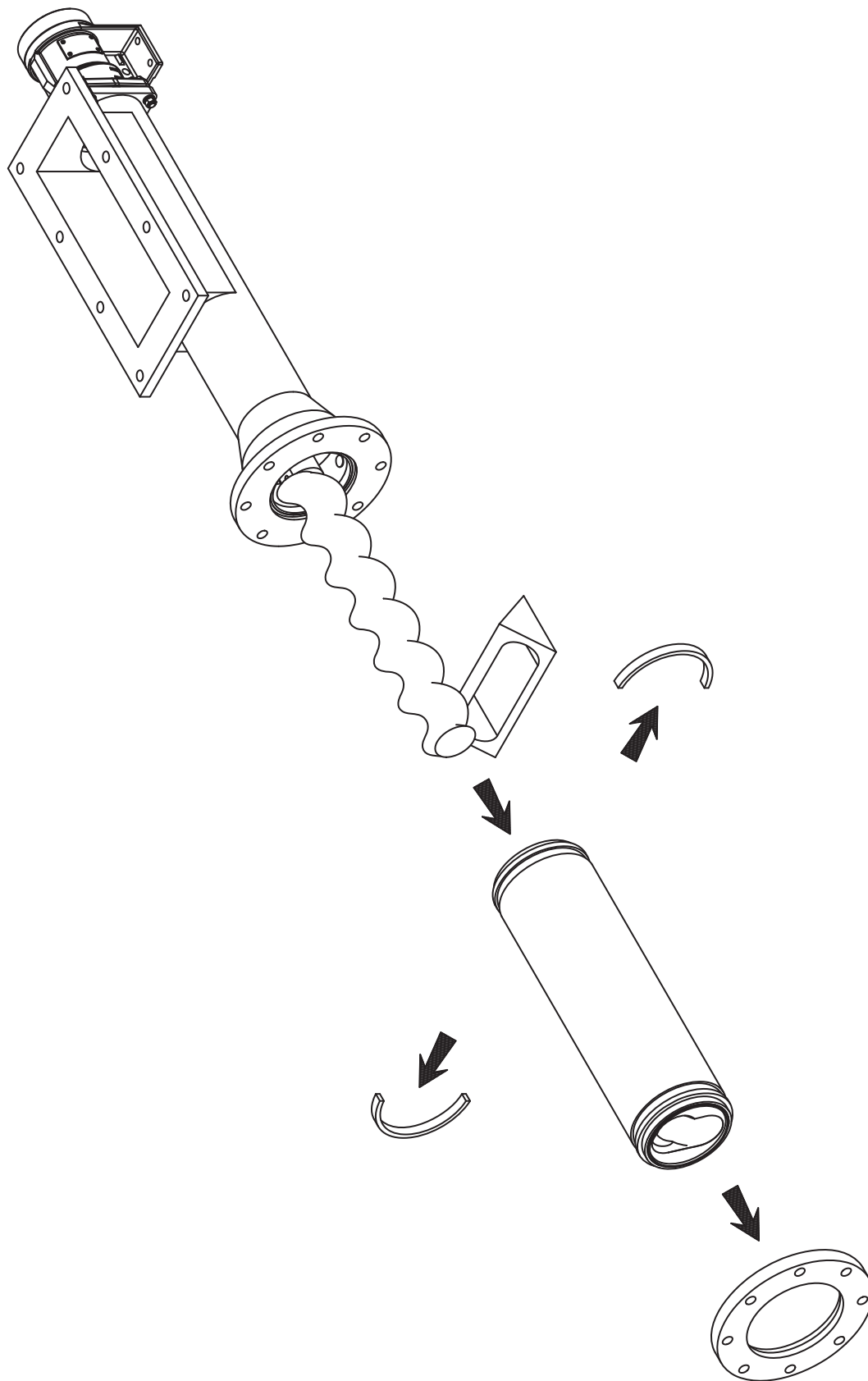


# Dismantling & Assembly Diagrams



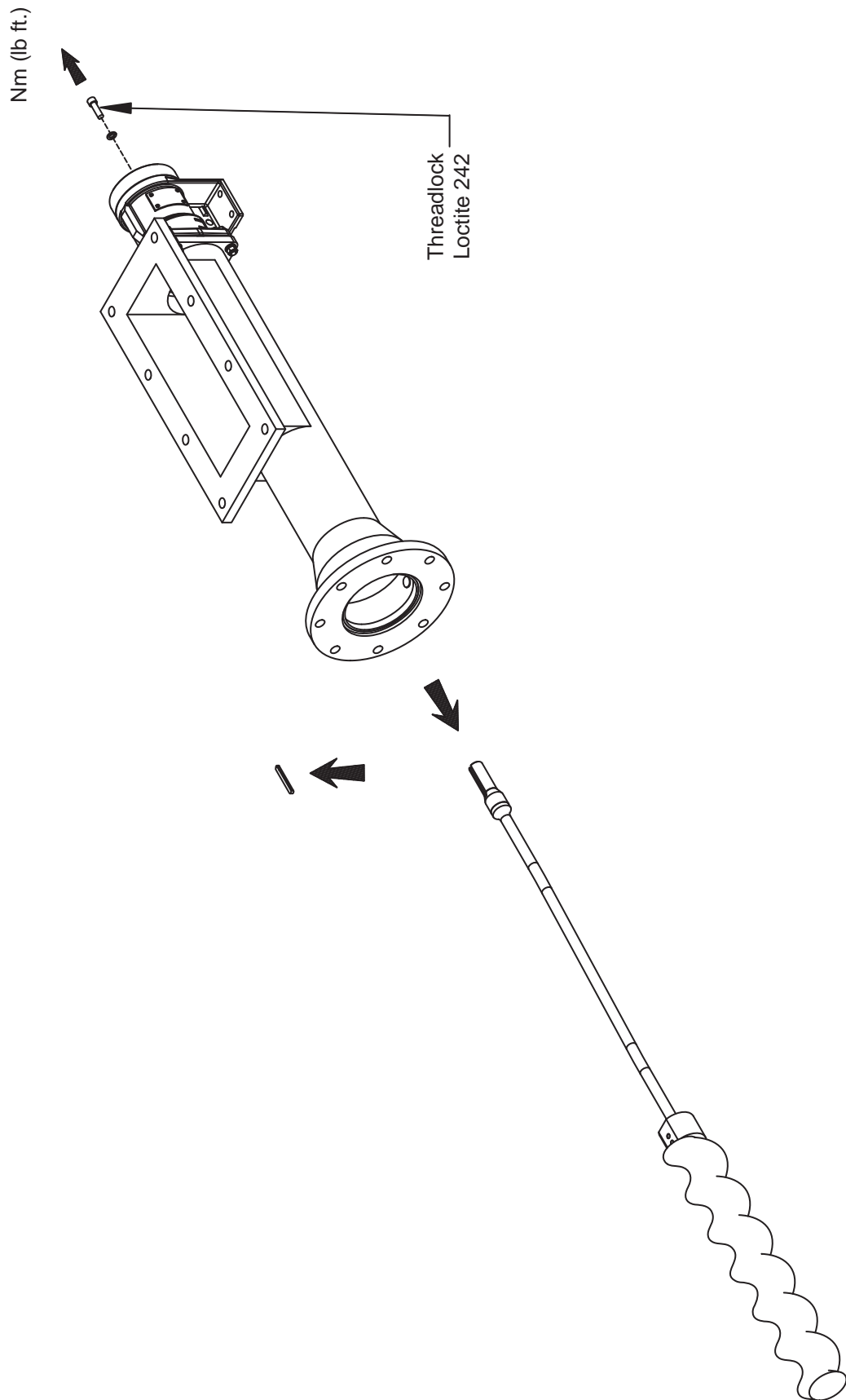
X043 ONLY

# Dismantling & Assembly Diagrams



ALL EXCEPT X043

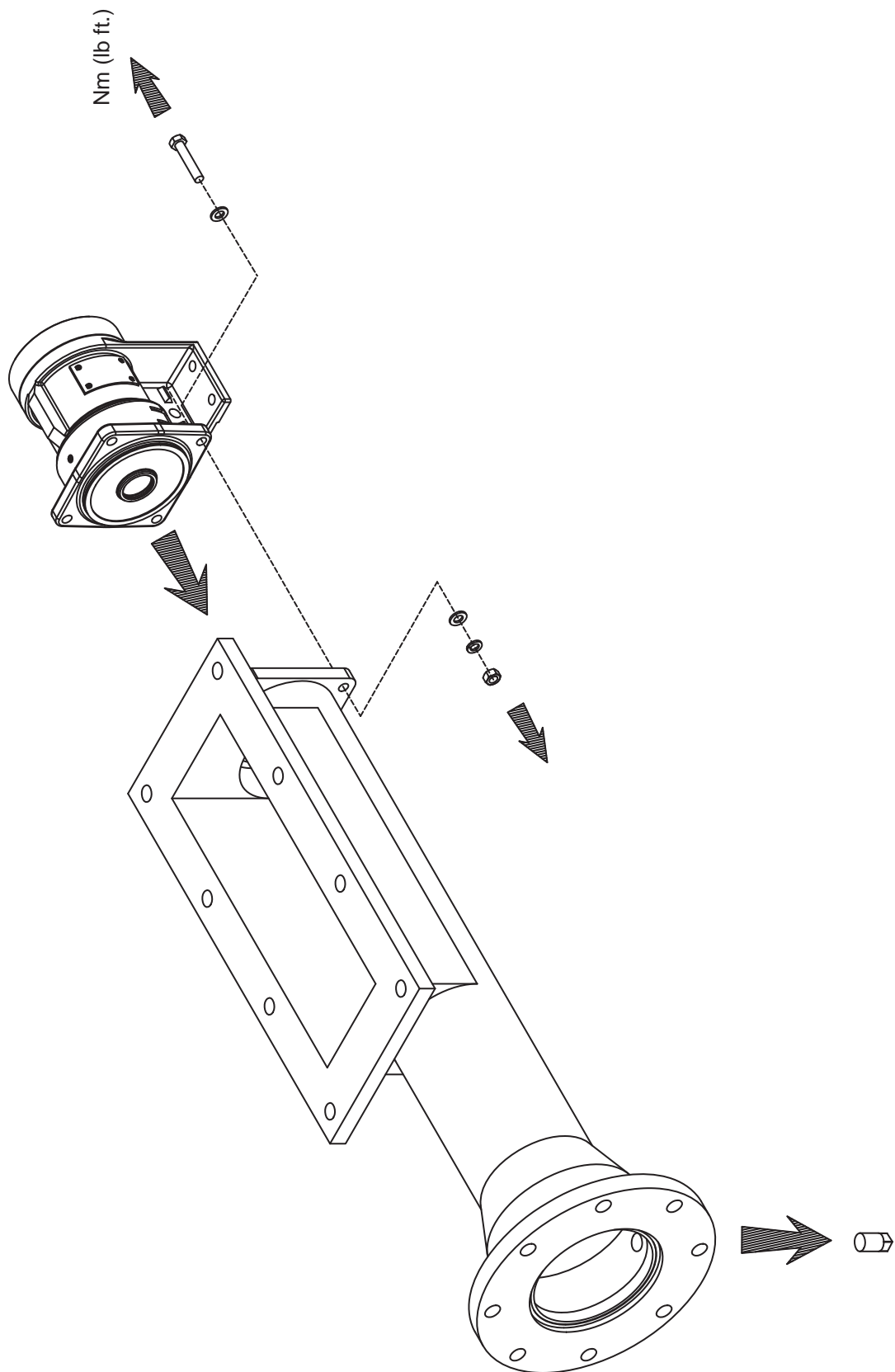
# Dismantling & Assembly Diagrams



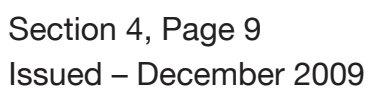
ALL MODELS

# Dismantling & Assembly Diagrams

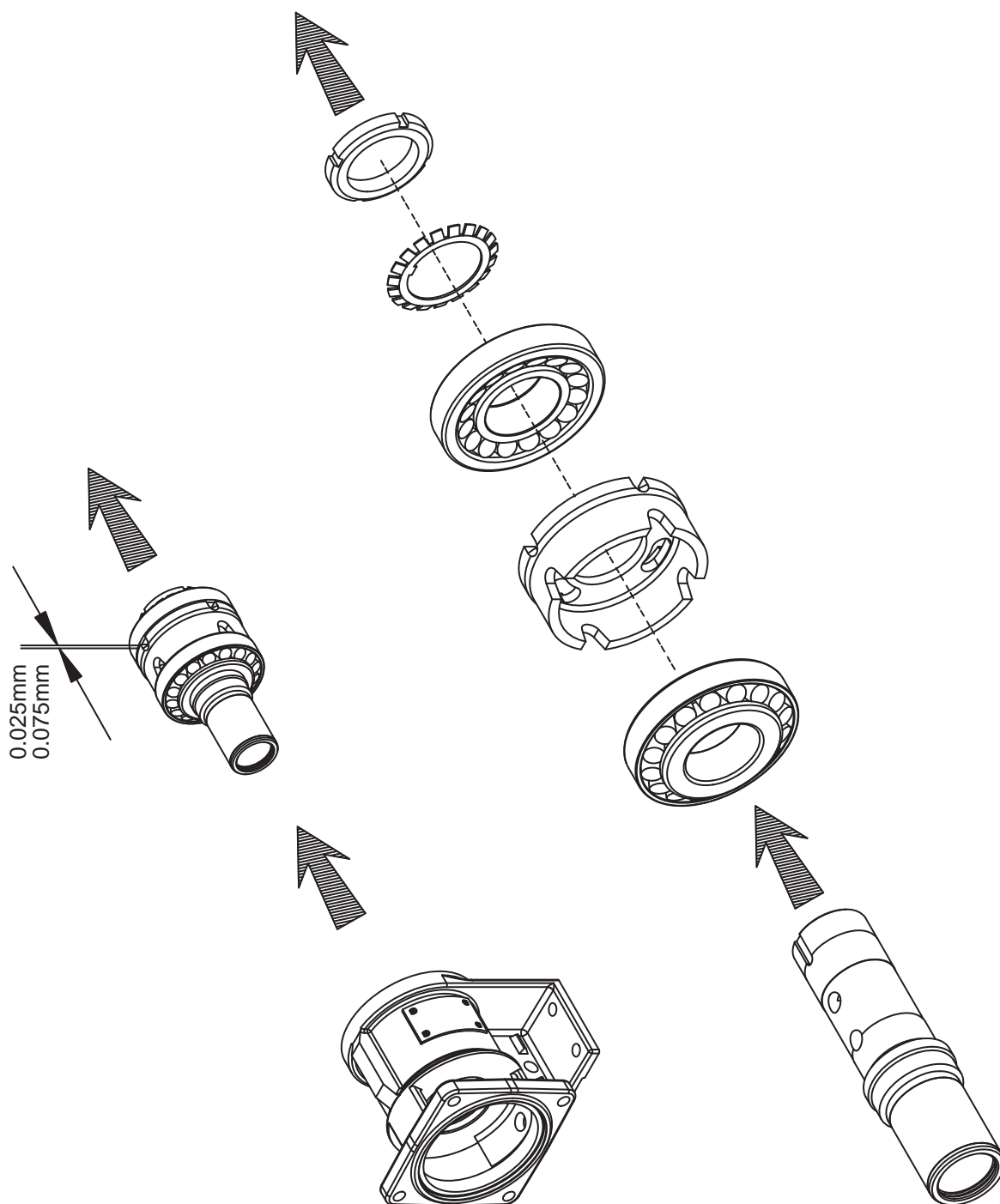
ALL MODELS



# ALL MODELS



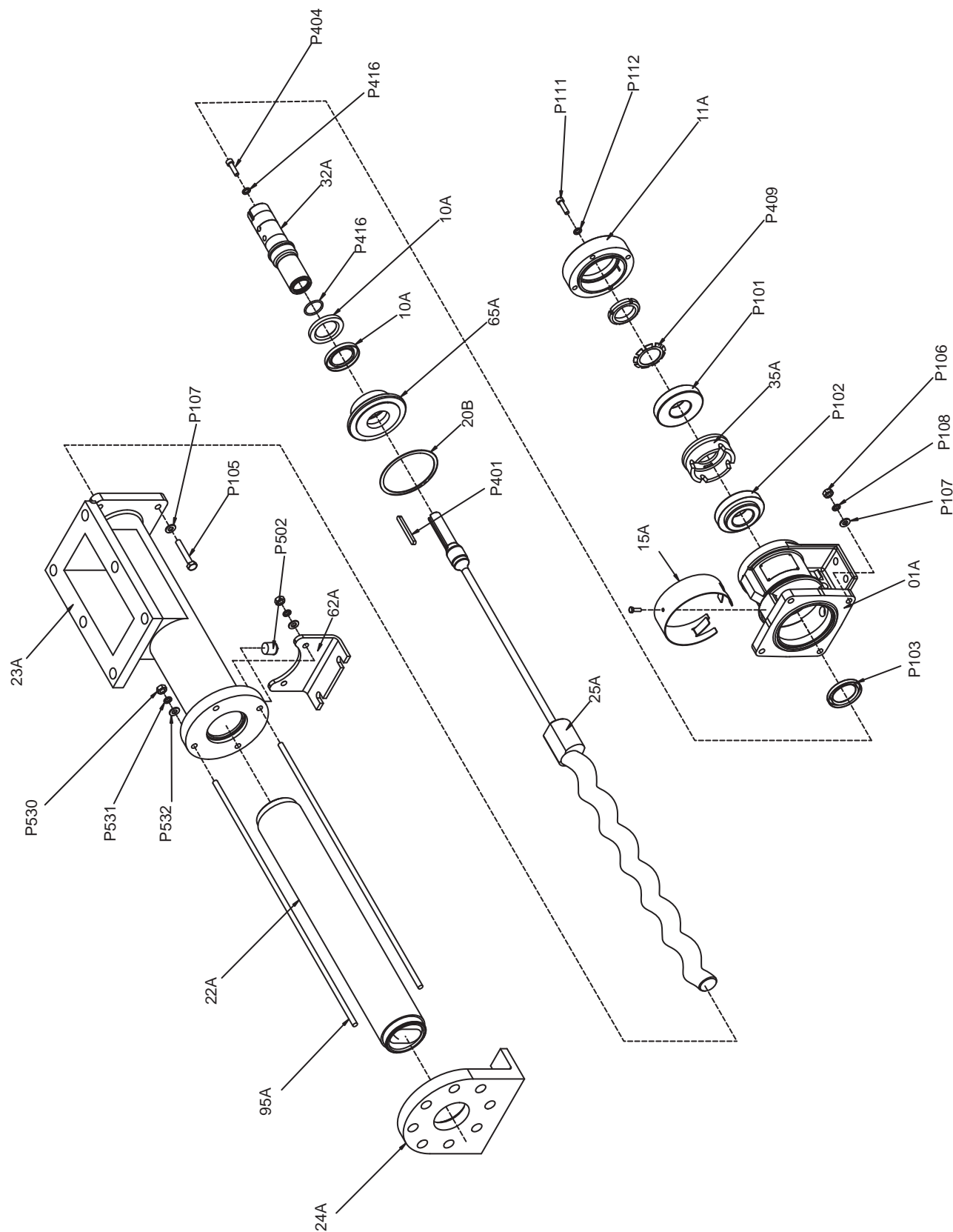
# Dismantling & Assembly Diagrams



ALL MODELS

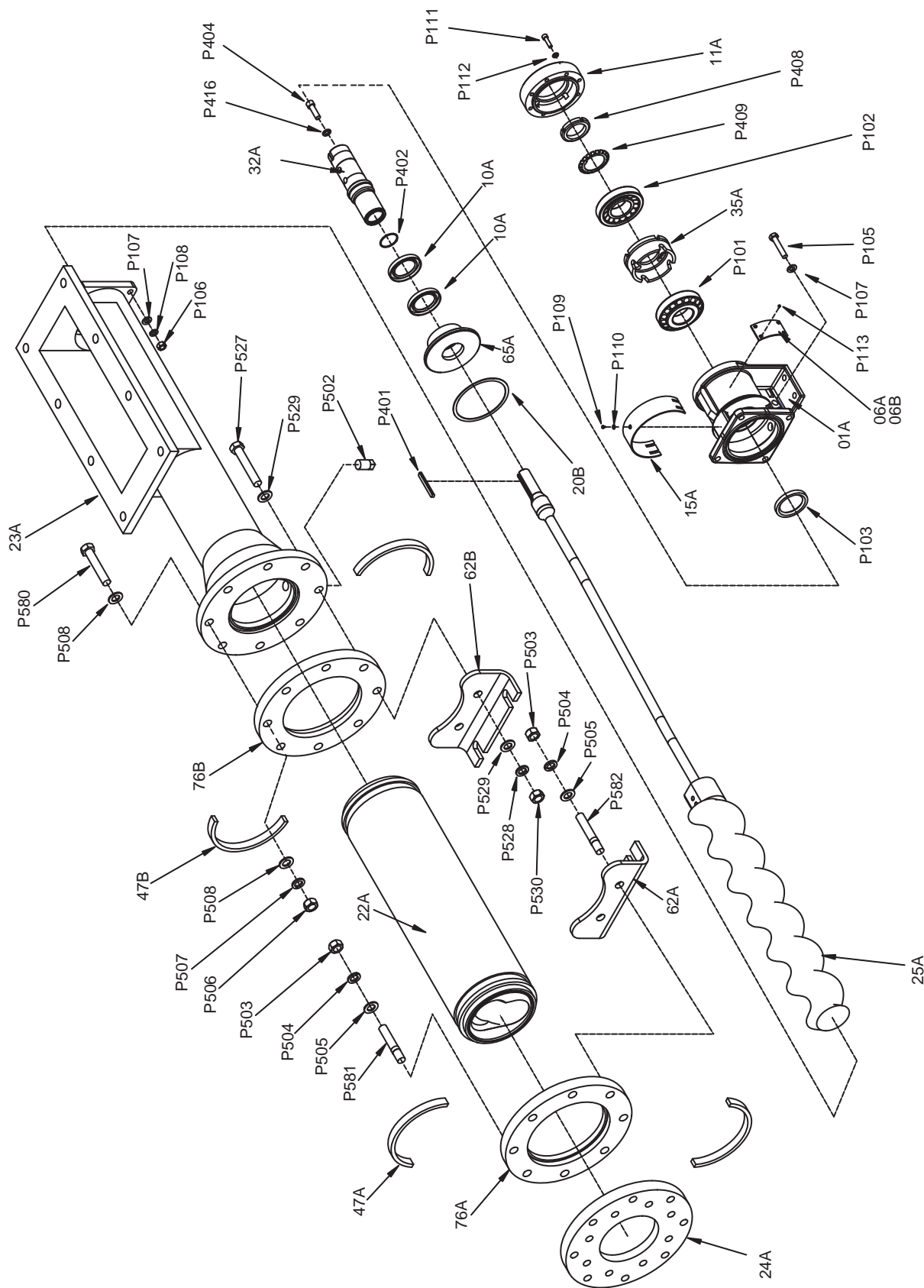
# Exploded Views

X043 ONLY



# Exploded Views

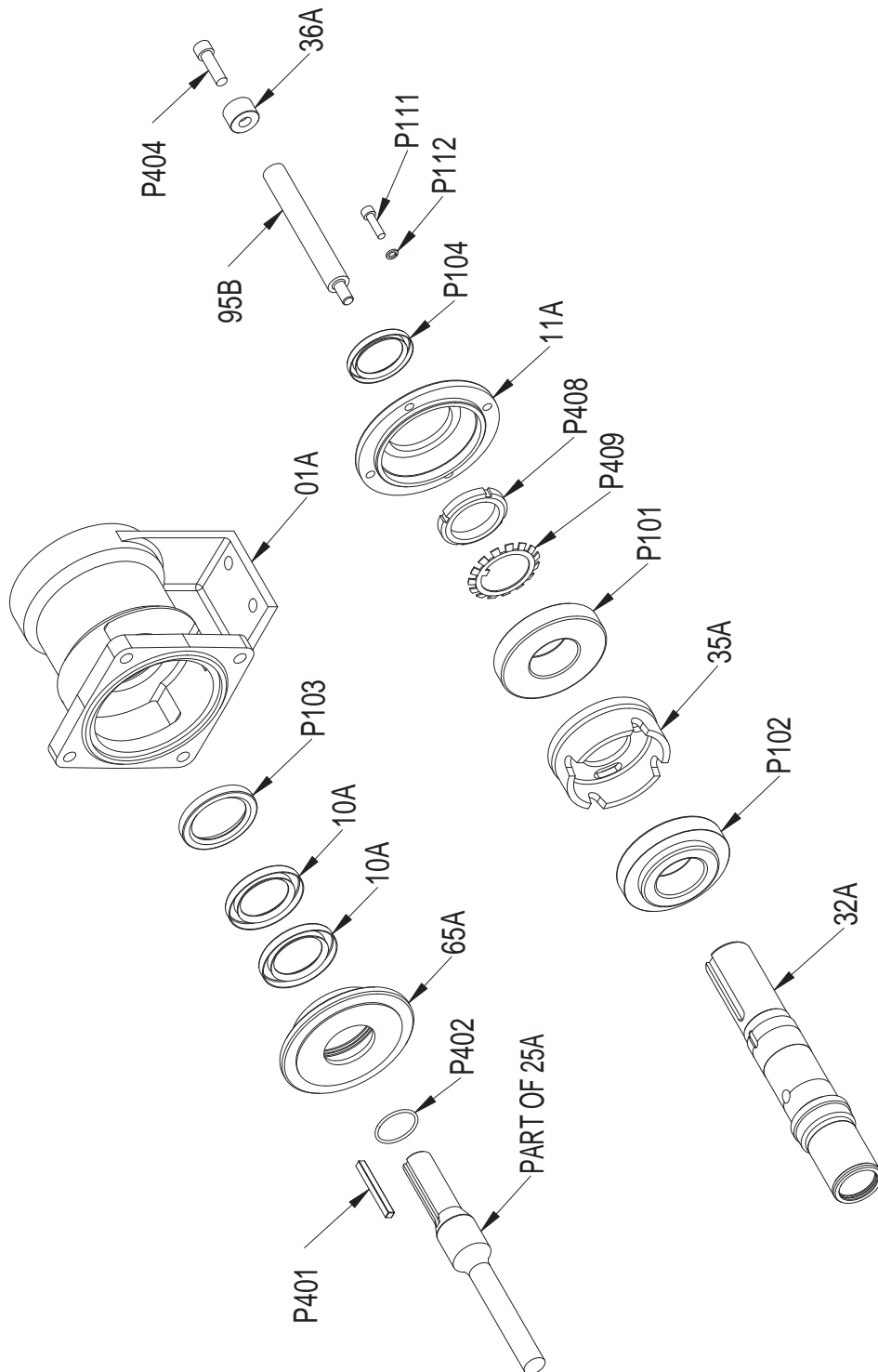
ALL EXCEPT X043





# Exploded Views

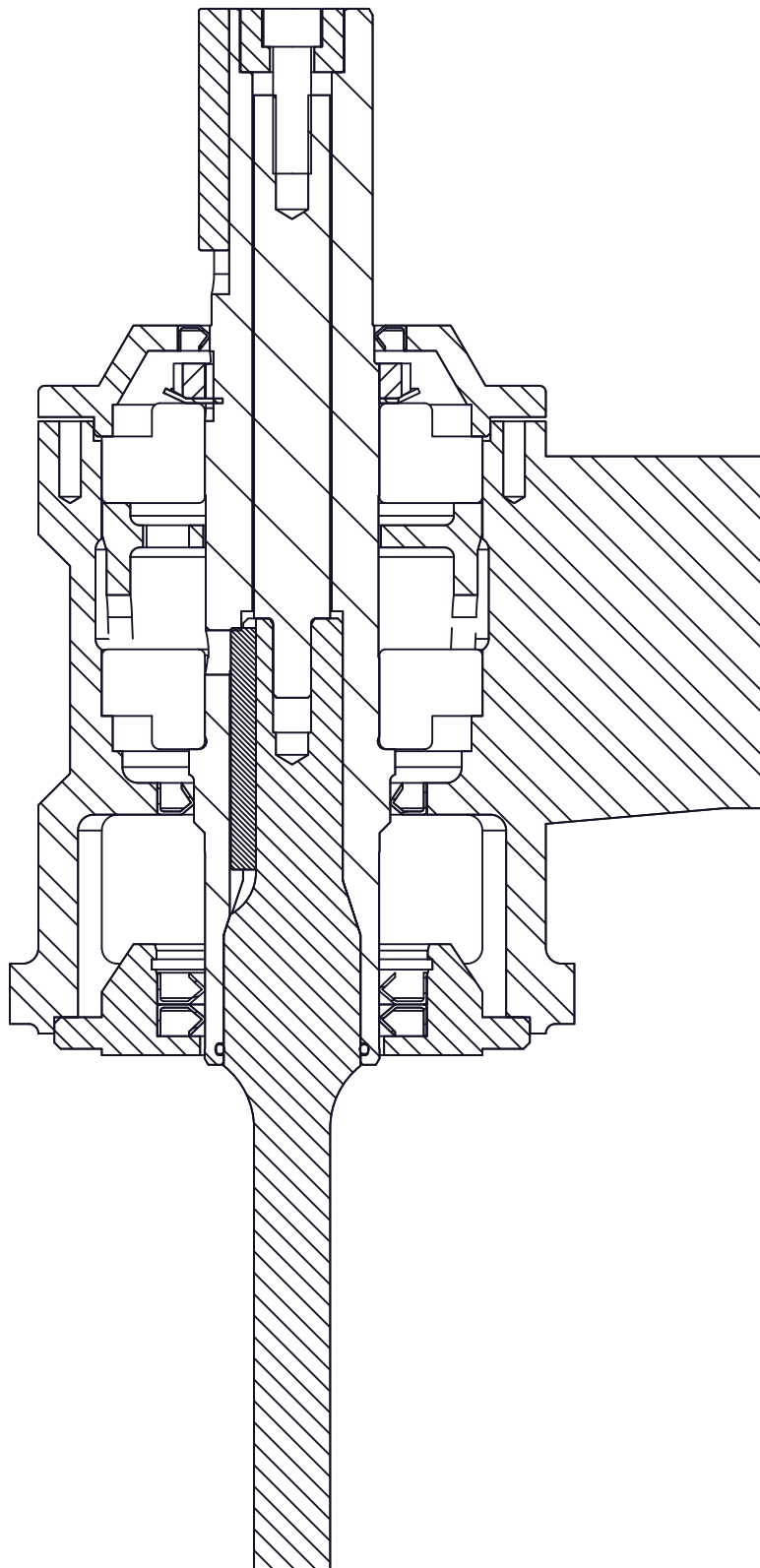
## X073 LONG COUPLED - DRIVE END



# Exploded Views

## X073 LONG COUPLED - DRIVE END SECTIONAL

Please ensure correct orientation of all lipseals



# Torque Tightening Figures

PUMP SIZE	SUCTION CHAMBER/BODY Nm (lb ft)	BEARING COVER Nm (lb ft)	FLEXISHAFT TIE BOLT Nm (lb ft)	STATOR TIE RODS Nm (lb ft)
	P105	P111	P404	95A
X043	25 (18)	15 (11)	60 (44)	25 (18)

PUMP SIZE	END COVER Nm (lb ft.)		SUCTION CHAMBER / STATOR Nm (lb ft.)		SUCTION CHAMBER / BODY Nm (lb ft.)	BEARING COVER Nm (lb ft.)	FLEXISHAFT TIE BOLT Nm (lb ft.)
	P582	P581	P580	P527	P105	P111	P404
X054	60 (44)	60 (44)	60 (44)	60 (44)	40 (30)	15 (11)	95 (70)
X061	60 (44)	60 (44)	60 (44)	60 (44)	25 (18)	15 (11)	60 (44)
X062	60 (44)	60 (44)	60 (44)	60 (44)	40 (30)	15 (11)	95 (70)
X063	60 (44)	60 (44)	60 (44)	60 (44)	40 (30)	15 (11)	95 (70)
X071	60 (44)	60 (44)	60 (44)	60 (44)	40 (30)	15 (11)	95 (70)
X073	60 (44)	60 (44)	60 (44)	60 (44)	40 (30)	15 (11)	95 (70)
X091	60 (44)	60 (44)	60 (44)	60 (44)	40 (30)	15 (11)	95 (70)
X093	60 (44)	60 (44)	60 (44)	60 (44)	90 (68)	15 (11)	95 (70)

# Mono Products

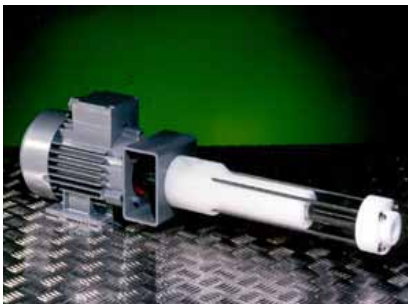
## Progressing Cavity (P.C.) Pumps



**E Range**  
Up to 420m<sup>3</sup>/h, 72 bar



**Merlin Ind. Range**  
Up to 60m<sup>3</sup>/h, 10 bar



**LF Range**  
Up to 600l/h, 12 bar



**Monobloc B Range**  
Up to 225m<sup>3</sup>/h, 24 bar



**W Range**  
Up to 215m<sup>3</sup>/h, 48 bar



**S Range**  
Up to 60m<sup>3</sup>/h, 12 bar



**B/G/M Range**  
Up to 3m<sup>3</sup>/h, 5 bar



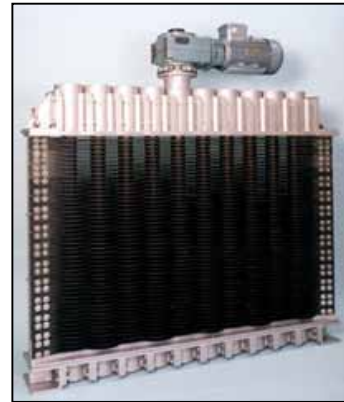
**Solar Pumps**  
Up to 5.8m<sup>3</sup>/h, 12 bar

# Mono Products

## Grinder / Screens / Extractor Packages



**Mutrator**  
Up to 15m<sup>3</sup>/h



**Discreen**  
Up to 13,400m<sup>3</sup>/h



**Compact Munchpump**  
Up to 25m<sup>3</sup>/h



**Screw Extraction Package**  
Up to 13,900m<sup>3</sup>/h



**Macerator**  
Up to 15m<sup>3</sup>/h



**Grifter**  
Up to 4m<sup>3</sup>/h



**Muncher Family**  
Up to 650m<sup>3</sup>/h

## Europe

Mono Pumps Ltd, Martin Street, Audenshaw  
Manchester, M34 5JA, England  
T. +44 161 339 9000  
E. [info@mono-pumps.com](mailto:info@mono-pumps.com)

D.M.I EST, 56, rue du Pont  
88300 Rebeuville, France  
T. +33 3 29 94 26 88  
E. [dmi-est@dmi-est.fr](mailto:dmi-est@dmi-est.fr)

## Americas

Monoflo Inc., 10529 Fisher Road  
Houston, Texas 77041, USA  
T. +1 713 980 8400  
E. [monoflo@nov.com](mailto:monoflo@nov.com)

Monoflo S.A., Ing Huergo 2239  
(1842) Monte Grande  
Pcia. de Buenos Aires, Argentina  
T. +54 11 4290 9940/50  
E. [info.monoflo@nov.com.ar](mailto:info.monoflo@nov.com.ar)

Monoflo Canada, 6010 – 53rd Ave  
Alberta, Lloydminster  
T9V2T2, Canada  
T. +1 780 875 5584  
E. [info.monoflo@nov.com](mailto:info.monoflo@nov.com)

## Asia

Mono Pumps Ltd, Building 5,  
Madong Industrial Park, 1250 Sicheng Rd  
Malu Town, Jiading District, Shanghai 201801  
T. +86 21 3990 4588  
E. [monoshanghai@nov.com](mailto:monoshanghai@nov.com)

## Australasia

Mono Pumps (Australia) Pty Ltd  
338-348 Lower Dandenong Road  
Mordialloc, Victoria 3195, Australia  
T. 1800 333 138  
E. [ozsales@mono-pumps.com](mailto:ozsales@mono-pumps.com)

Mono Pumps (New Zealand) Ltd  
35-41 Fremlin Place, Avondale  
Auckland, 1026, New Zealand  
T. +64 9 829 0333  
E. [info@mono-pumps.co.nz](mailto:info@mono-pumps.co.nz)

Melbourne	T.	03 9580 5211	F.	03 9580 6659
Sydney	T.	02 8536 0900	F.	02 9542 3649
Brisbane	T.	07 3350 4582	F.	07 3350 3750
Adelaide	T.	08 8447 8333	F.	08 8447 8373
Perth	T.	08 9303 0444	F.	08 9303 4430
Darwin	T.	08 8931 3300	F.	08 8931 3200
Kalgoorlie	T.	08 9022 4880	F.	08 9022 3660
Christchurch NZ	T.	+64 3 341 8379	F.	+64 3 341 8486

[www.monopumps.com](http://www.monopumps.com)



© Mono Pumps Limited September 2010 Literature reference: MPA584/7

Published information other than that marked CERTIFIED does not extend any warranty or representation, expressed or implied, regarding these products. Any such warranties or other terms and conditions of sales and products shall be in accordance with Mono Pumps Limited standard terms and conditions of sale, available on request.

Mono® is a registered trademark of Mono Pumps Ltd.

Registered in England No 300721

**NOV Mono®**

One Company, Unlimited Solutions