

**CONTROLLED,
SUSTAINABLE,
COST EFFECTIVE.**



HSE ANIMAL EFFLUENT RANGE OF PUMPS

The very heart of your effluent irrigation system.

monopumps.com.au



THE VERY HEART OF YOUR EFFLUENT IRRIGATION SYSTEM.

Features

With a long history of manufacturing Progressing Cavity (PC) pumps, we're constantly working to solve your operational challenges.

A Mono™ HSE dairy effluent pump can offer considerable cost savings by eliminating the need for a series of pumps when pumping over a long distance or high head. In some situations it can also mean not having to go to the expense of upgrading the existing power supply, with the potential to save you thousands.

Based on comparisons with centrifugal effluent pumps that deliver a similar performance, choosing a Mono HSE dairy effluent pump provides you with a cost-effective option.

Capacity	Up to 50m ³ /h
Pressure	Up to 120m
Models	Higher flow and pressure models available upon request
Construction Materials	Available in cast iron body, hard chrome-plated rotor and nitrile rubber stator
Sealed Joints	Fully sealed drive train to maximise life and minimise downtime
Shaft Sealing – Horizontal	Silicon carbide mechanical seal
Standard Base Plate	Stainless steel

Benefits

HIGH EFFICIENCY PUMP

Requires up to 75% less power than an equivalent centrifugal pump.

LOW POWER USAGE

May eliminate the need to upgrade power supply to ensure effluent irrigation compliance.

LOW RUNNING SPEEDS

Reduced wear for a longer working pump life, which extends the period between routine maintenance.

SURFACE MOUNTED

Making it easier, cleaner and less hazardous for any maintenance.

CONSTANT FLOW

Ideal for pumping effluent over long distances while providing a constant flow for even application.

EFFLUENT APPLICATION COMPLIANT

When connected up to modern irrigators or pod systems, the system can deliver ideal application rates over a wide range of terrain.

NATIONAL COVERAGE

Mono's extensive dealer network is on hand to assist with your installation and servicing needs.

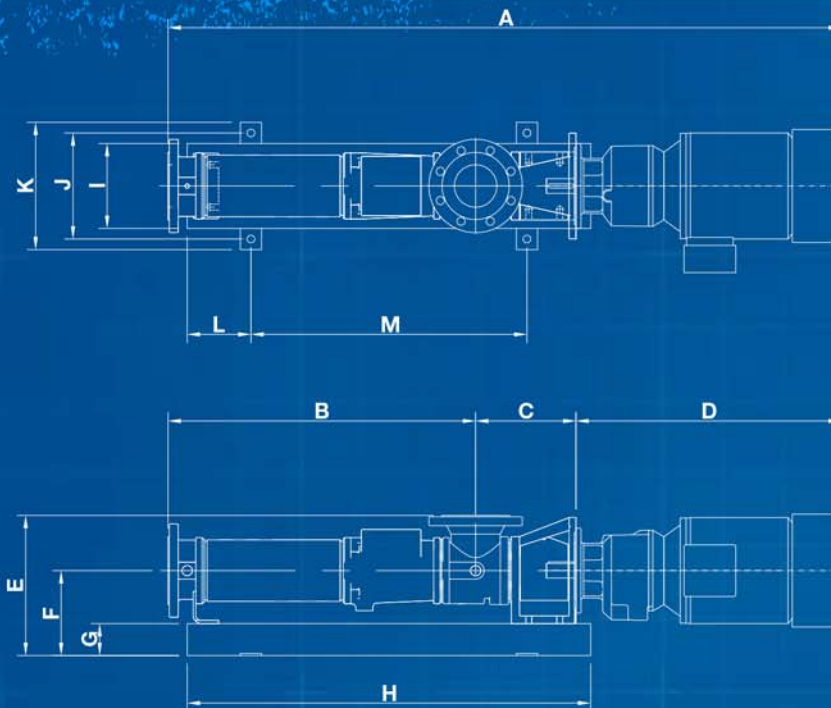
TRUSTED AND RELIABLE

The effluent pump is part of the Mono reliable and robust PC pumping range from the world's largest progressing cavity pump manufacturer.



So nothing goes to waste.
monopumps.com.au

Product Dimensions

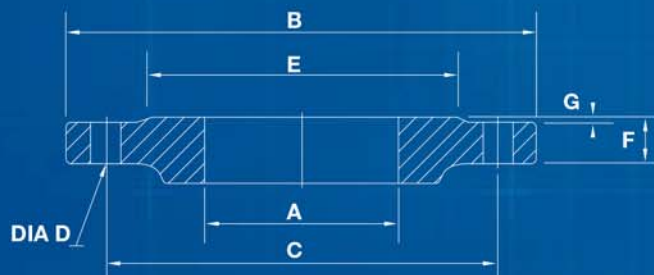


Pump Model

Pump Model	A	B	C	D	E	F	G	H	I	J	K	L	M
HSE 12/60	1510	724	236	550	306	175	50	1375	200	250	300	150	1075
HSE 15/60	1767	830	281	656	360	200	50	1375	200	250	300	150	1075
HSE 16/100	2011	1036	319	656	330	200	50	1375	200	250	300	150	1075
HSE 18/90	2011	1036	319	656	330	200	50	1375	200	250	300	150	1075
HSE 22/100	2271	1198	281	792	360	200	50	1800	250	300	350	150	1200
HSE 25/100	2271	1198	281	792	360	200	50	1800	250	300	350	150	1200
HSE 33/80	2535	1374	369	792	370	210	50	1800	250	300	350	150	1500
HSE 30/110	2535	1374	369	792	370	210	50	1800	250	300	350	150	1500
HSE 42/100	2648	1541	315	792	395	210	50	1800	250	300	350	150	1500

* all measurements are in millimeters unless otherwise stated

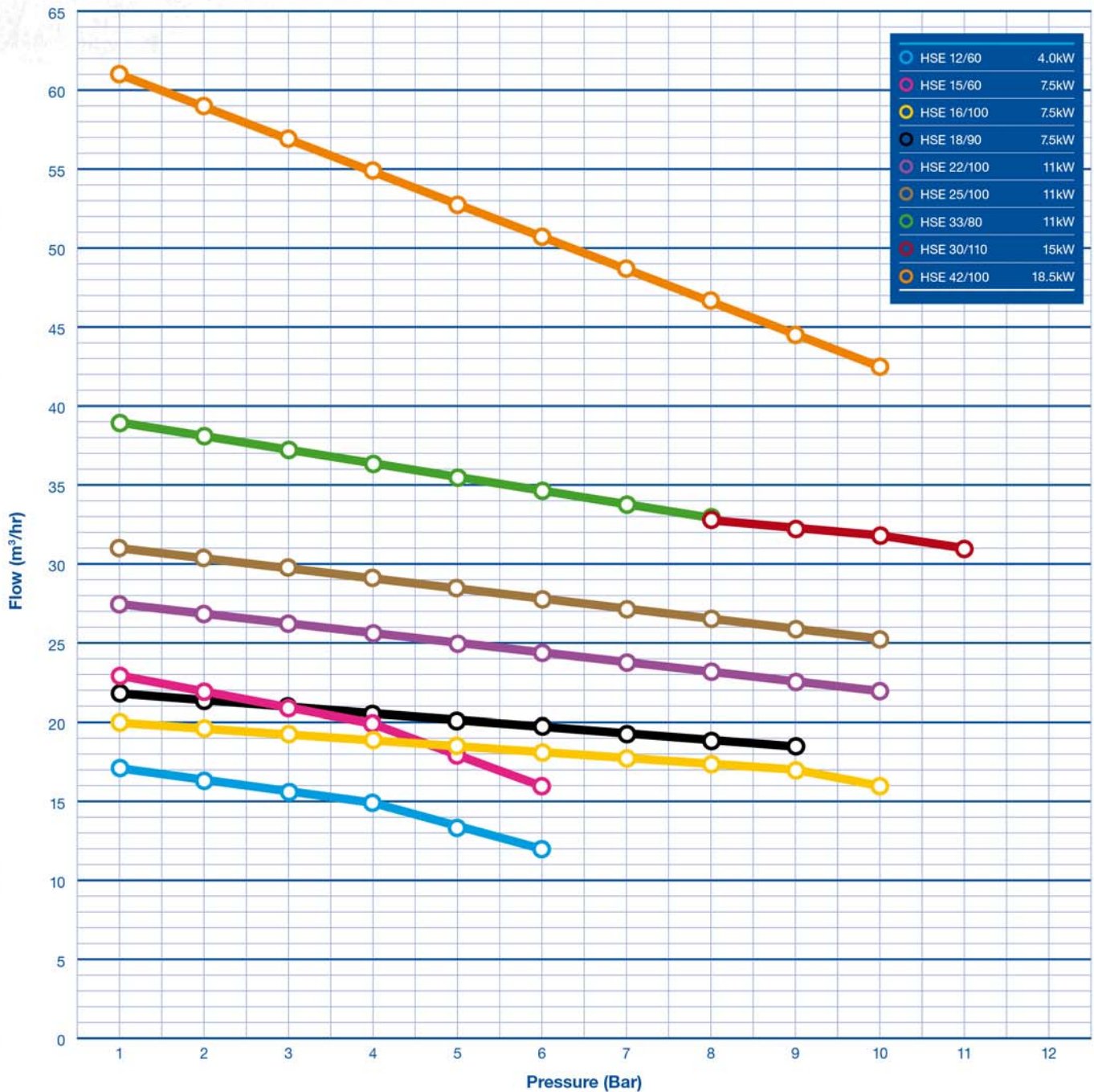
Flange Data



Pump Construction	Pump Models	Flange Specification	Dimensions (Number)						
			A	B	C	D	E	F	G
Cast Iron	HSE 12/60, 16/100, 18/90	BS EN 1092 Section 3.2 PN16 DIN 2533-16	100	220	180	19 (8)	156	24	3
	HSE15/60, 22/100, 25/100, HSE 33/80, 30/110		125	250	210	19 (8)	184	26	3
	HSE 42/100		150	285	240	23 (8)	211	26	3

* all measurements are in millimeters unless otherwise stated

Performance Data



Whilst all reasonable care has been taken to ensure the accuracy of the provided information, pump performance can and will vary depending on actual operating conditions (product consistency, temperature, and pressure losses). The information provided should be used as a guide only and in light of Mono's aim towards ongoing product development, specifications and performances are subject to change without notice.

For details of your local dealer, please contact:

Mono Pumps (Australia) Pty Ltd

Ph: 1800 333 138
Email: ozsales@nov.com

Mono Pumps (New Zealand) Ltd

Ph: 0800 659 012
Email: info@mono-pumps.co.nz